



**stelmec**<sup>®</sup>  
beyond boundaries

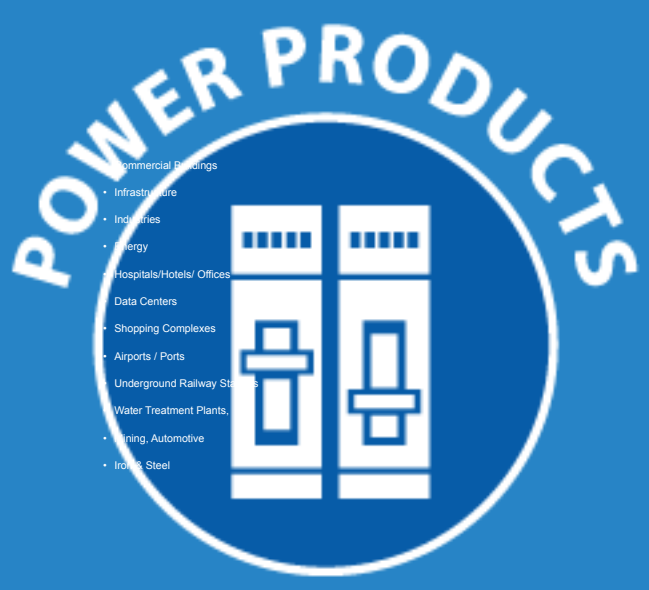
# RING MAIN UNIT

- RATINGS UP TO 12KV, 630A, STC 21KA (3 SEC), BIL 28/75 KV, 50 HZ
- METAL-ENCLOSED SWITCHGEAR, TYPE-TESTED, ACCORDING TO IEC 62271-200
- INTERNAL ARC CLASSIFICATION 21 KA FOR 1 SEC AFLR



We are committed to provide range of products complying with the electrical power industry standards and that exceeds customer expectation





**stelmec**<sup>®</sup>  
beyond boundaries

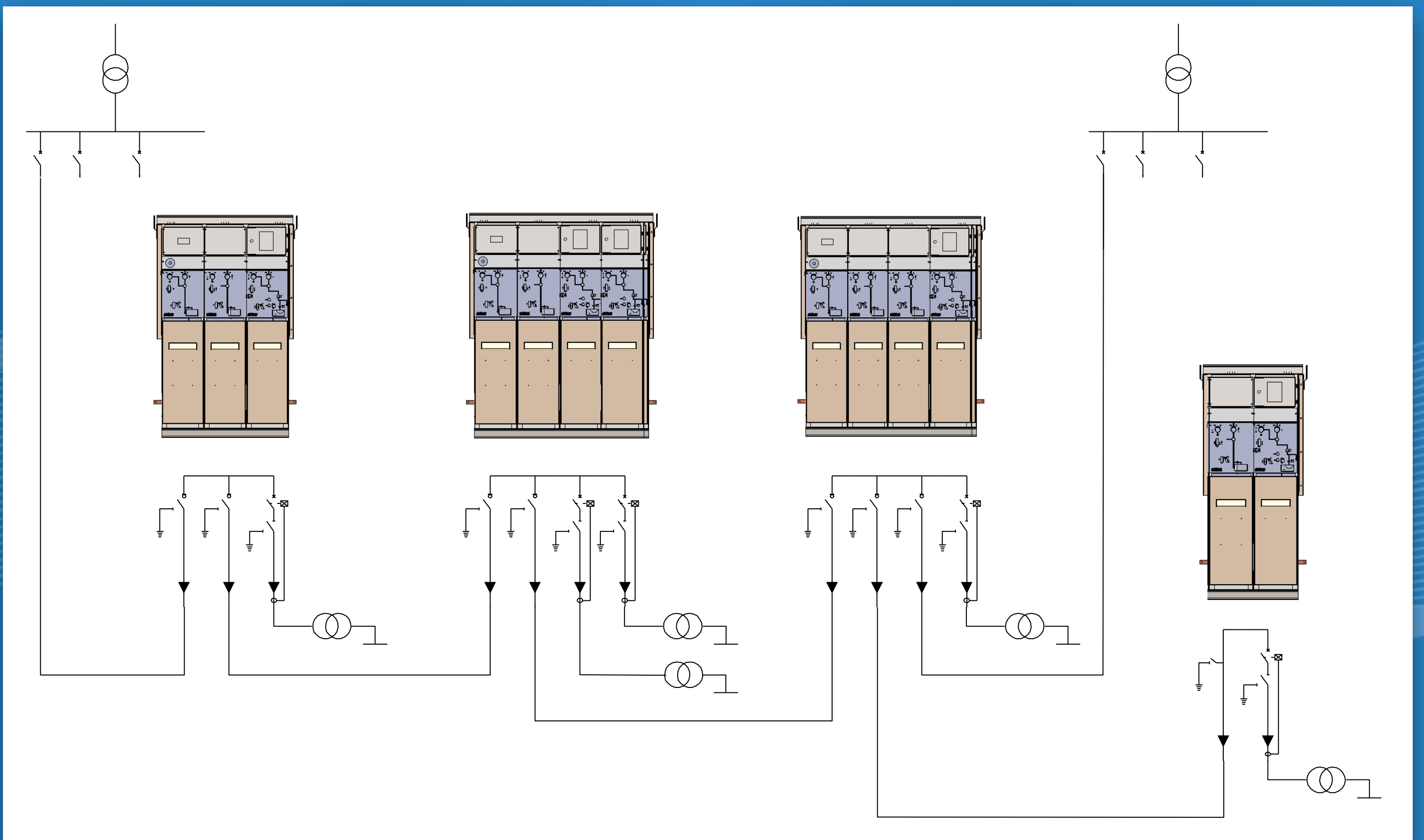
# APPLICATIONS

- Commercial Buildings
- Infrastructure
- Industries
- Energy
- Hospitals/Hotels/Offices
- Data Centers
- Shopping Complexes
- Airports / Ports
- Underground Railway Stations
- Water Treatment Plants,
- Mining, Automotive
- Iron & Steel
- Wind Power/ Solar Power
- Compact Substations





# RING MAIN UNIT NETWORK



## RING MAIN UNIT IN NETWORK

### 12kV AIS VCB Panel

- Compact and robust
- Draw-out VCB with Compartmentalized design
- Seamless Integration with SCADA Network for Remote Operation and Control
- Encapsulated Pole Design
- Arc Venting outside room



# RING MAIN UNIT

## TECHNICAL SPECIFICATIONS

Rated Voltage	12 kV
Rated Frequency	50 Hz
Rated Main Bus Bar Current	630 A
Rated Feeder Current	630 A
Rated Insulation Level	28/75 kV
VCB, LBS and ES Rated Short Time Current (3 sec)	21 kA
Rated Active Load Breaking Current to the LBS	630 A
Internal Arc Qualification	21 kA for 1 sec AFLR
Class :	
Circuit breaker	E2, M2, C2, S2
Load break switch	E2, M1, C2
Earthing switch	E1, MO

## VACUUM CIRCUIT BREAKER

Rated Voltage	12 kV
Rated Frequency	50 Hz
Rated Current	630 A
Rated Insulation Level	28/75 kV
Rated Short Time Current (3 sec )	21 kA
Rated Short Circuit Making Current	52.5 kA
Rated Operating Sequence	O-O.3s-CO-3 min-CO
Class (as per IEC 62271-100)	E2, M2, C2, S2





## LOAD BREAK SWITCH

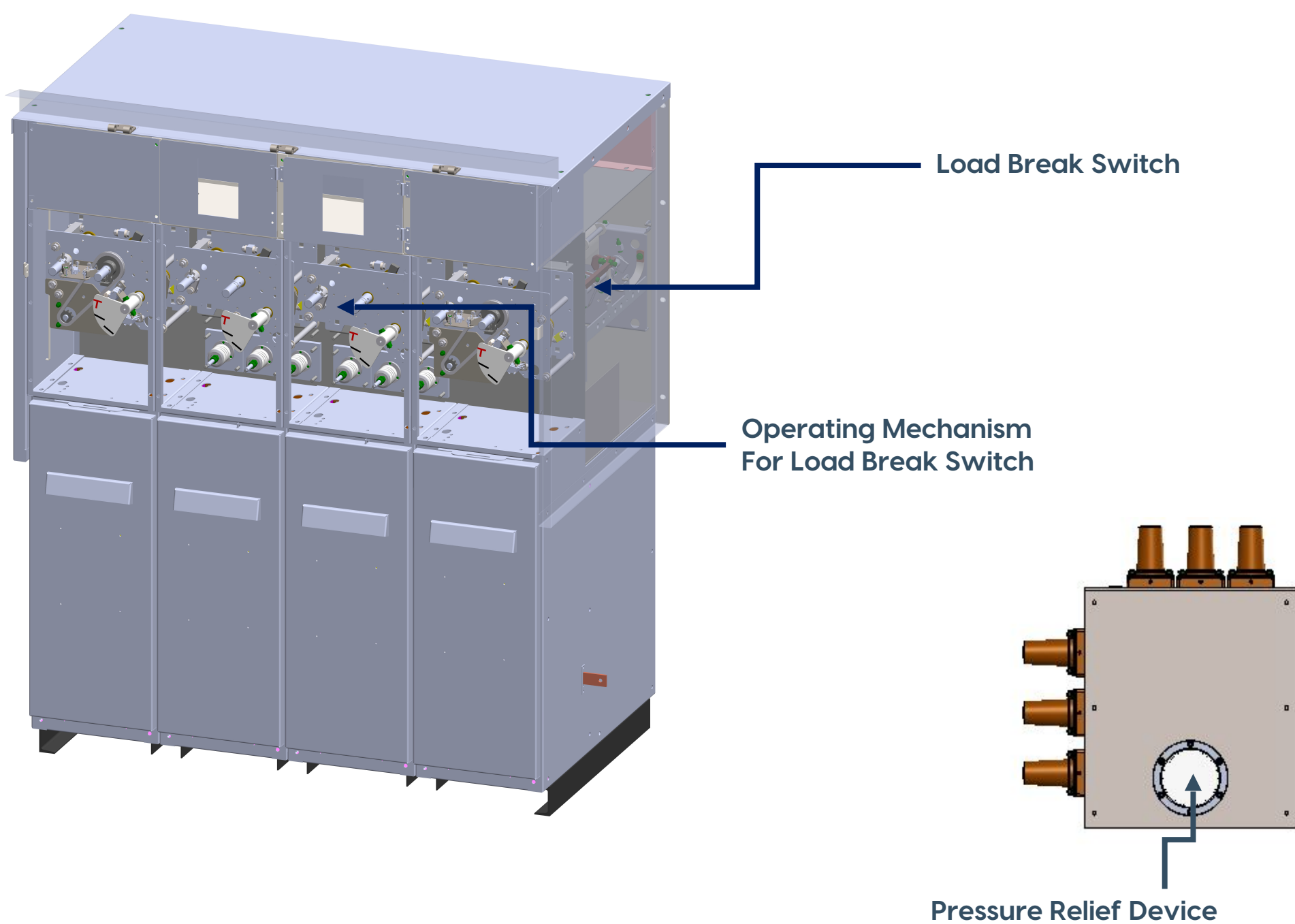
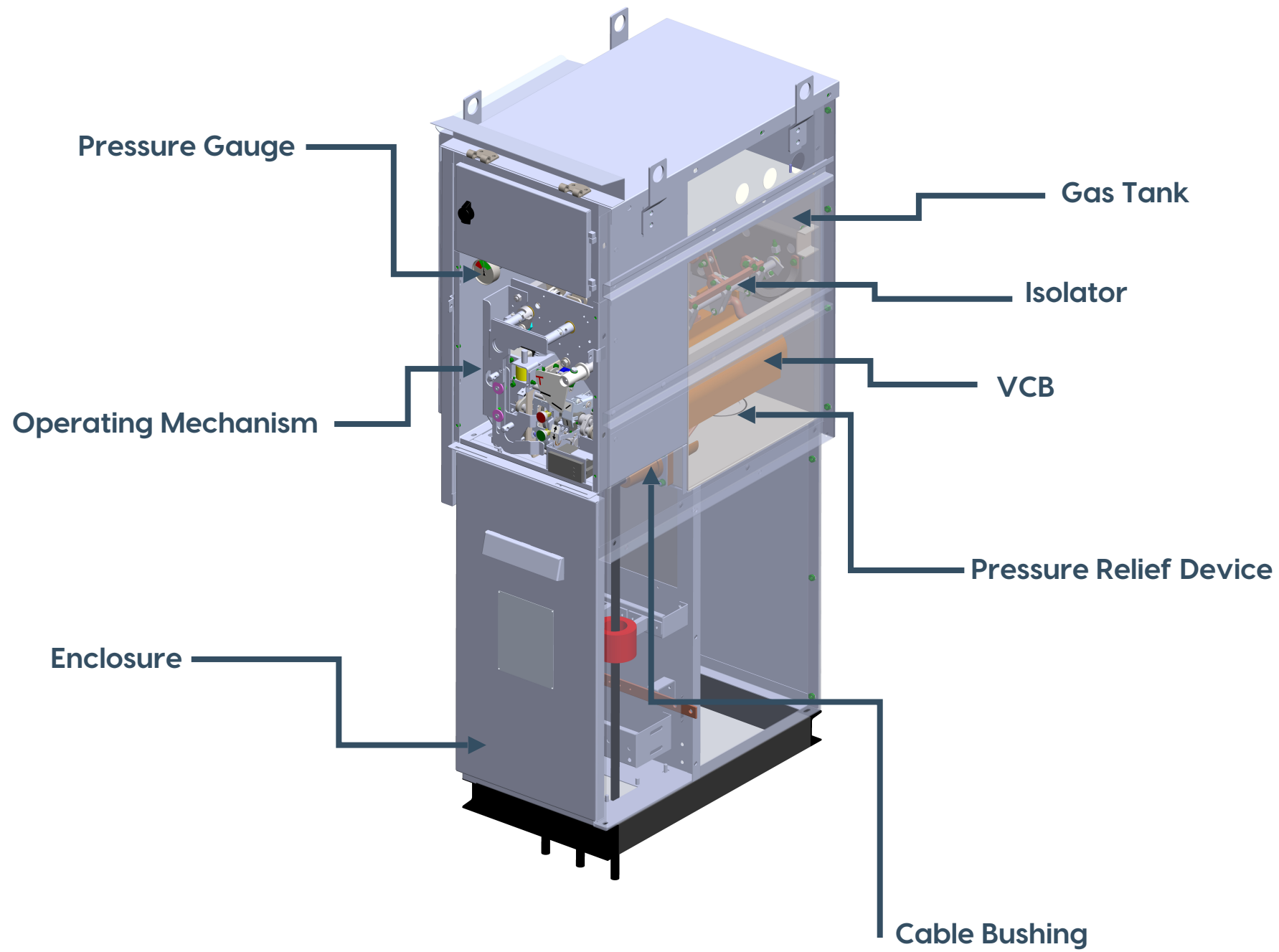
Rated Voltage	12 kV
Rated Frequency	50 Hz
Rated Current	630 A
Rated Insulation Level	28/75 kV
Rated Short Time Current (3 sec )	21 kA
Rated Short Circuit Making Current	52.5 kA
Rated Operating Sequence	O-O.3s-CO-3 min-CO
Class (as per IEC 62271-100)	E2, M1, C2

## LOAD BREAK SWITCH

Rated Short Time Current (3 sec )	21kA
Class (as per IEC 62271-102)	E1, MO



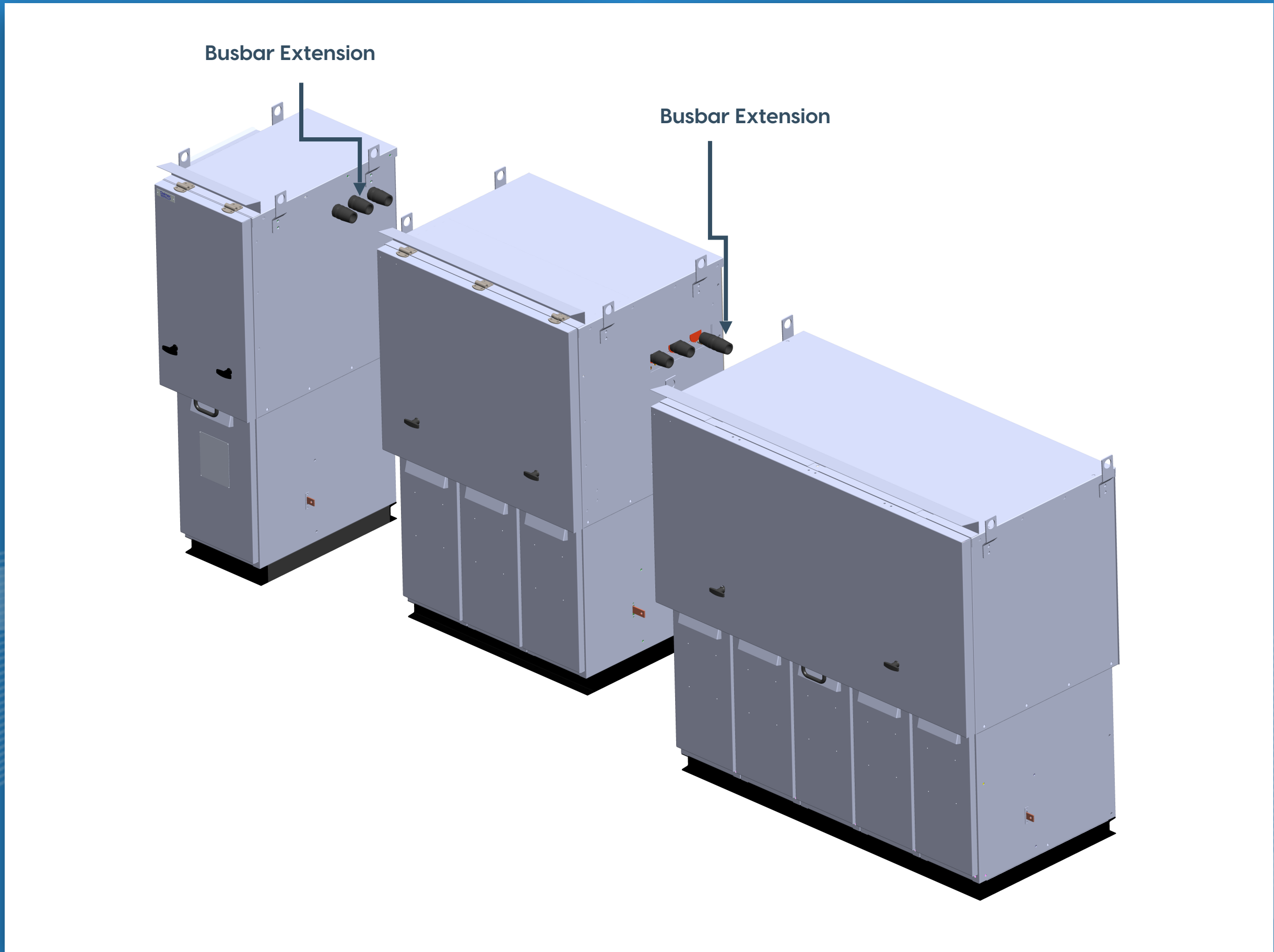
# CONSTRUCTION



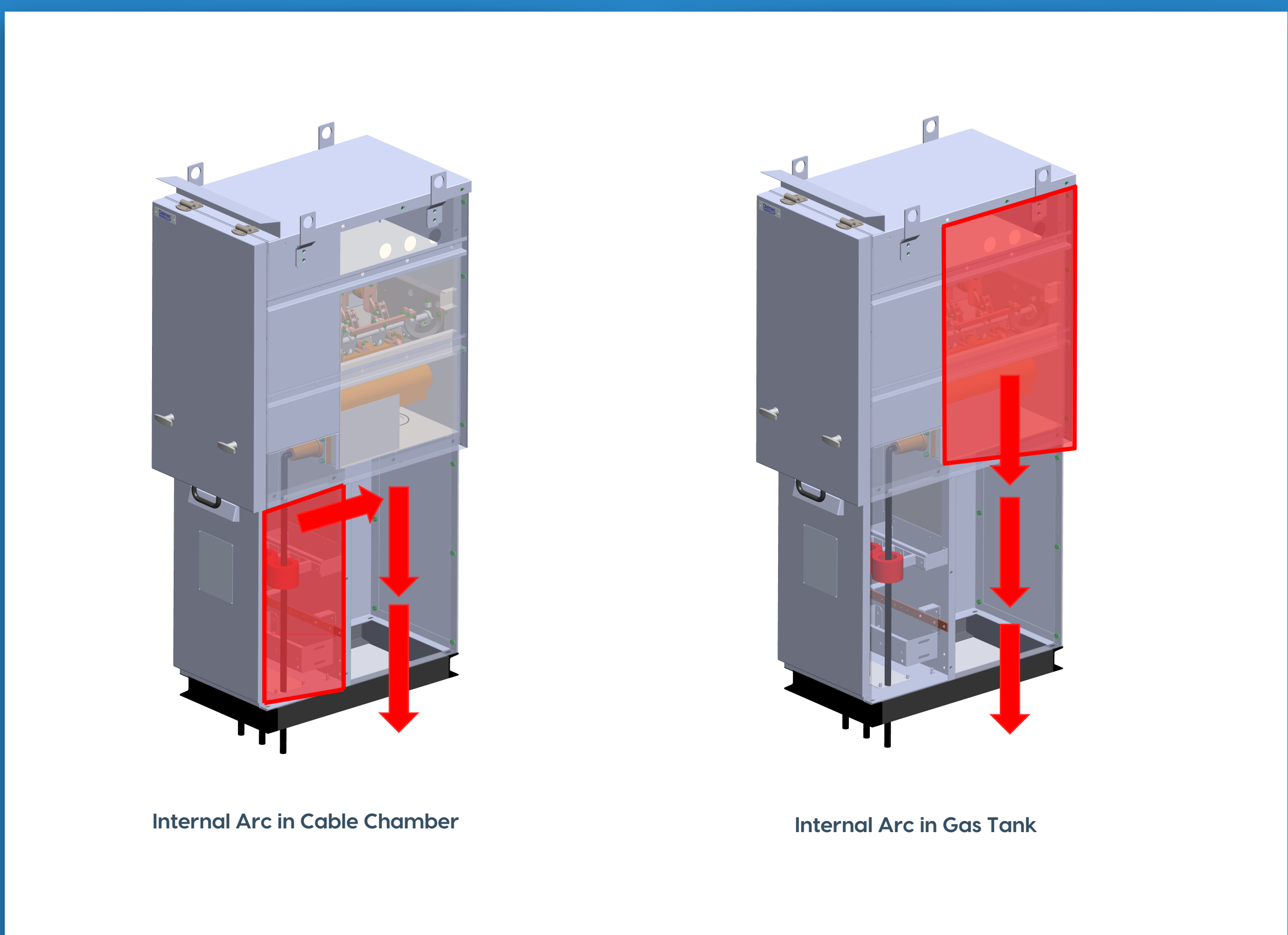




# SWITCHGEAR

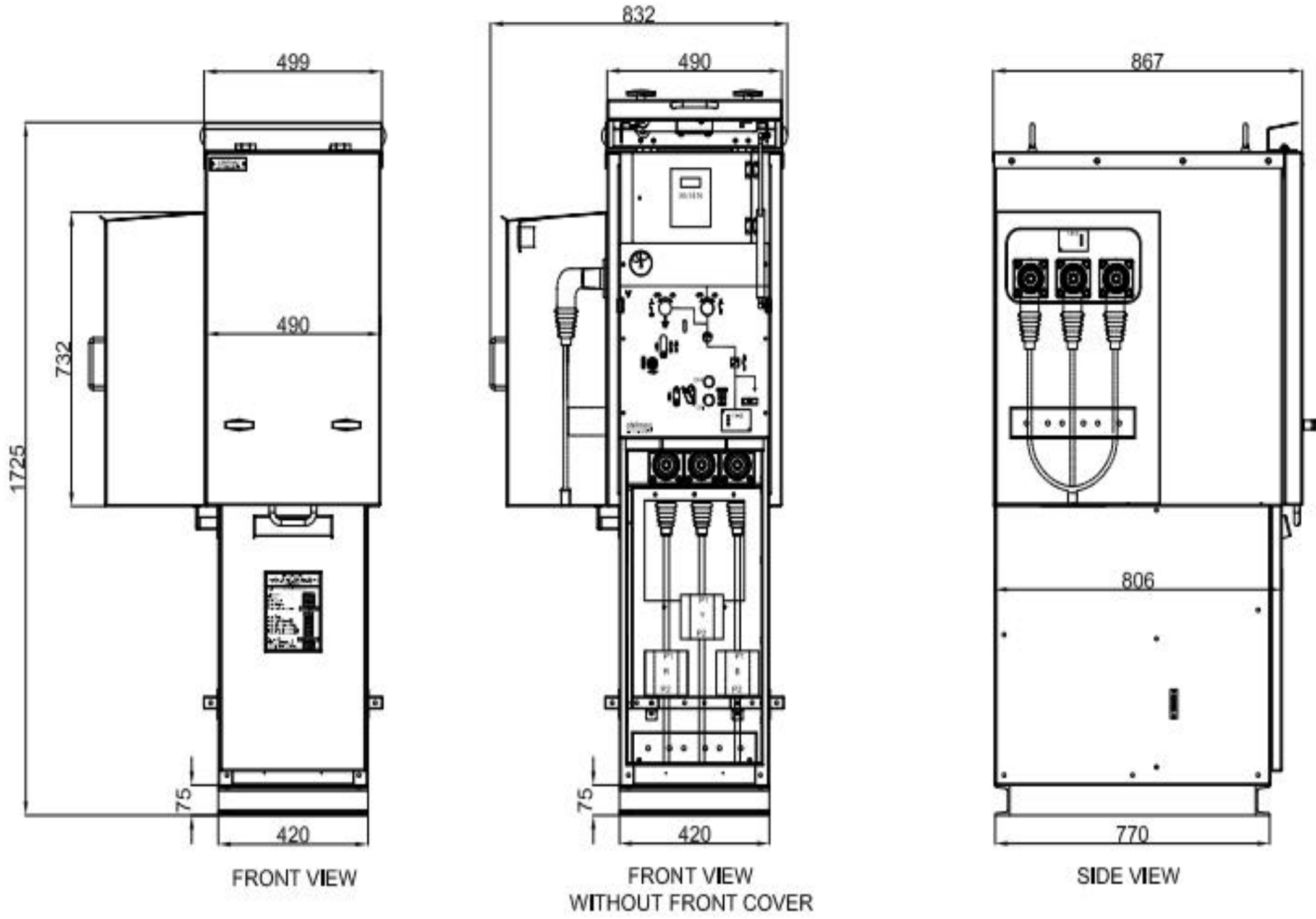


# ARC VENTING

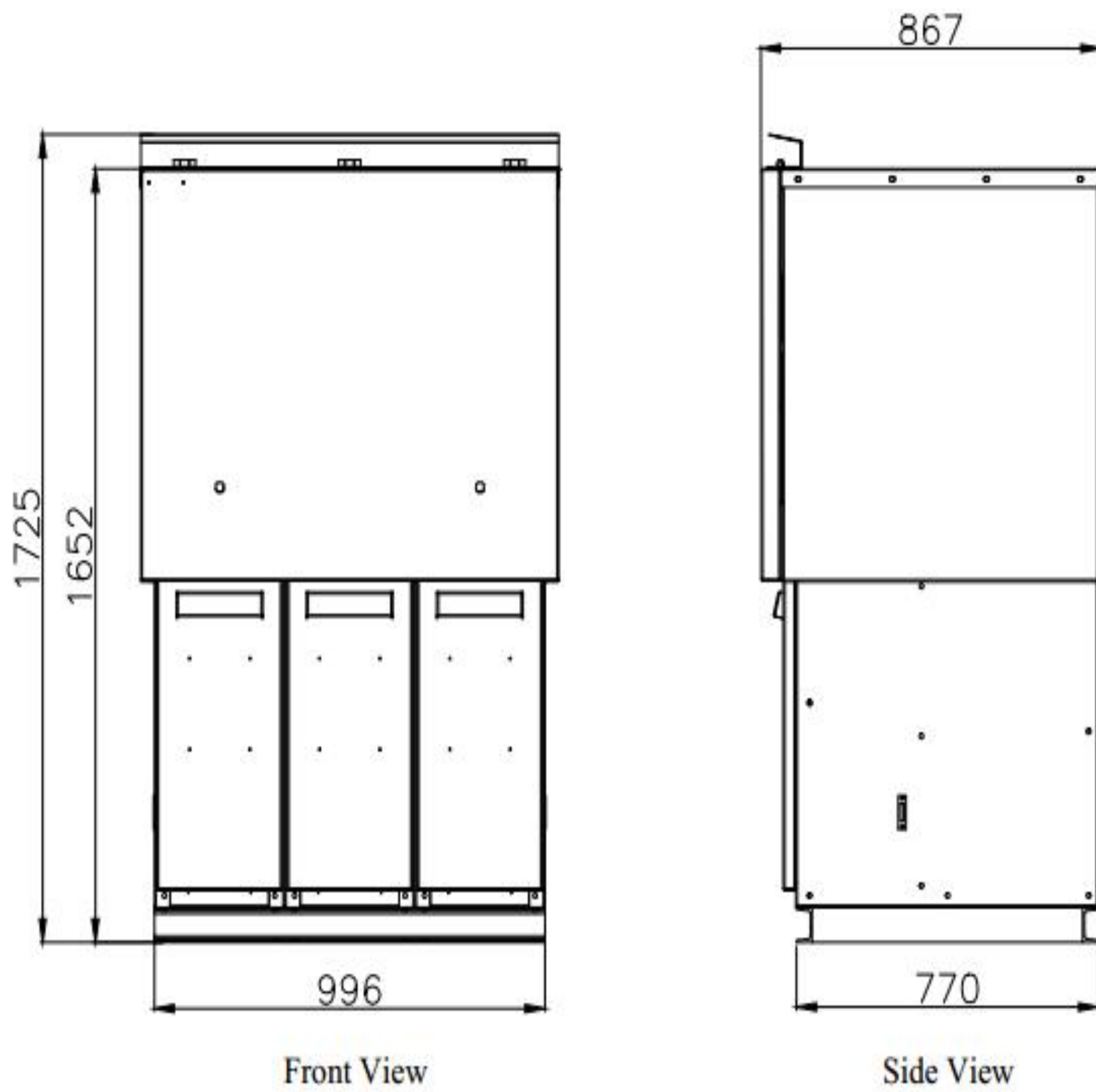




# GA DRAWING



1 Way-V RMU



3 Way-LVL RMU